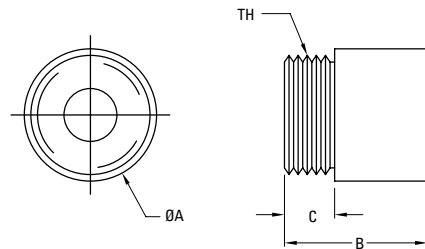




Thread Mount Bronze Nuts

For Acme Screws



For standard bronze nuts, Thomson uses SAE 660 bearing bronze which provides excellent load carrying ability, good wear resistance and is less susceptible to damage from impact and shock loading. Custom bronzes can be selected if required.

Material Properties

Maximum Temperature	Friction Coefficient	Material*	Tensile Strength
max. 250°F	0.2 to 0.3	SAE 660	35,000 psi

* Other materials available on a custom basis.

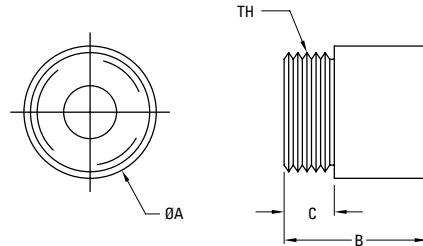
1/4" to 5/8" Diameter

Dia.	Lead	Nut Part No. for R.H. Screws	Nut Part No. for L.H. Screws	Bronze Nut Dimensions				Fits Flange No.	Design Load†	Maximum Static Load	Torque to Raise 1 Pound (in-oz)
				A	B	C	TH				
1/4"	0.050	BN2520	BN2520L	0.625	0.625	0.187	9/16-18	F25	110 lbs	550 lbs	0.41
	0.0625	BN2516	—								0.43
	0.250	BN4-2516	—								1.00
3/8"	0.0625	BN3716	—	0.750	0.750	0.250	5/8-18	F37	300 lbs	1,500 lbs	0.61
	0.083	BN3712	BN3712L								0.64
	0.100	BN3710	BN3710L								0.67
	0.125	BN3708S	—								0.76
	0.167	BN2-3712S	—								0.86
1/2"	0.100	BN5010	BN5010L	1.00	1.00	0.375	15/16-16	F50	620 lbs	3,100 lbs	0.83
	0.200	BN2-5010	—								1.10
5/8"	0.100	BN6210	BN6210L	1.00	1.00	0.375	15/16-16	F50	860 lbs	4,300 lbs	0.99
	0.125	BN6208S	—								1.06
	0.200	BN2-6210	—								1.26

† Load ratings based on using Thomson grease. See page 44.

Thread Mount Bronze Nuts

For Acme Screws



3/4" to 3" Diameter

Dia.	Lead	Nut Part No. for R.H. Screws	Nut Part No. for L.H. Screws	Bronze Nut Dimensions				Fits Flange No.	Design Load†	Maximum Static Load	Torque to Raise 1 Pound (in-oz)
				A	B	C	TH				
3/4"	0.100	BN7510	BN7510L	1.50	1.50	0.500	1-3/8 - 16	F75	1,500 lbs	7,500 lbs	1.15
	0.125	BN7508	—								1.21
	0.167	BN7506	BN7506L								1.28
	0.200	BN7505	BN7505L								1.35
1"	0.100	BN1010	—	1.50	1.50	0.500	1-3/8 - 16	F75	1,900 lbs	9,500 lbs	1.47
	0.125	BN1008	—								1.52
	0.200	BN1005	—								1.67
	0.250	BN1004	—								1.76
	0.500	BN5-1010	—								2.55
	1.000	BN10-1010	—								3.91
1-1/4"	0.200	BN1205*	—	1.75	1.75	0.625	1-9/16 - 18	R1004-3	3,000 lbs	15,000 lbs	1.99
	0.250	BN1204*	—								2.09
1-1/2"	0.200	BN1505*	—	2.25	2.25	0.530	1.967-18	R54-3	4,600 lbs	23,000 lbs	2.31
	0.250	BN1504*	—								2.41
	0.500	BN2-1504*	—								3.08

† Load ratings based on using Thomson grease. See page 44.

* Non-stock item